

GCHI & GCHIB

Steam, Air & Gas

Applications to 750°F¹ (cont'd.)

Specifications and Ordering Information

kW	Volts	Ckt & Phase	Dimensions (In.)			Model	Stock	PCN	Wt. (Lbs.)
			A	B	C				
Series 06 — 5 inch, 150 lb carbon steel vessel — 6 INCOLOY® elements¹ (23 W/in²) with thermostat									
9	240	1-1	41-3/4	30	11-3/8	GCHI-06-009P-E1	NS	013303	135
9	240	1-3	41-3/4	30	11-3/8	GCHI-06-009P-E1	NS	104715	135
9	480	1-1	41-3/4	30	11-3/8	GCHI-06-009P-E1	NS	013311	135
9	480	1-3	41-3/4	30	11-3/8	GCHI-06-009P-E1	NS	013320	135
12	240	1-1	48-3/4	37	14-7/8	GCHI-06-012P-E1	NS	013338	164
12	240	1-3	48-3/4	37	14-7/8	GCHI-06-012P-E1	S	104870	164
12	480	1-1	48-3/4	37	14-7/8	GCHI-06-012P-E1	NS	013346	164
12	480	1-3	48-3/4	37	14-7/8	GCHI-06-012P-E1	S	104598	164
20	240	1-1	60-1/4	48-1/2	20-5/8	GCHI-06-020P-E1	NS	013354	195
20	240	1-3	60-1/4	48-1/2	20-5/8	GCHI-06-020P-E1	NS	013362	195
20	480	1-1	60-1/4	48-1/2	20-5/8	GCHI-06-020P-E1	NS	013370	195
20	480	1-3	60-1/4	48-1/2	20-5/8	GCHI-06-020P-E1	S	105478	195
25	240	1-1	73-5/8	61-7/8	27-5/16	GCHI-06-025P-E1	NS	013389	212
25	480	1-3	73-5/8	61-7/8	27-5/16	GCHI-06-025P-E1	NS	013397	212
25	240	1-1	73-5/8	61-7/8	27-5/16	GCHI-06-025P-E1	NS	013400	212
25	480	1-3	73-5/8	61-7/8	27-5/16	GCHI-06-025P-E1	NS	013418	212
30	240	1-3	86-5/8	74-7/8	33-7/8	GCHI-06-030P-E1	NS	013434	240
30	480	1-3	86-5/8	74-7/8	33-7/8	GCHI-06-030P-E1	NS	013450	240
Series 18 — 8 inch, 150 lb carbon steel vessel — 18 baffled INCOLOY® elements¹ (20 W/in²)									
30	240	3-3	54-5/16	32-11/16	29-3/16	GCHIB-18-030P-E1	NS	080768	350
30	480	3-3	54-5/16	32-11/16	29-3/16	GCHIB-18-030P-E1	NS	080776	350
40	240	3-3	61-5/16	39-11/16	36-3/16	GCHIB-18-040P-E1	NS	080784	420
40	480	3-3	61-5/16	39-11/16	36-3/16	GCHIB-18-040P-E1	NS	080792	420
50	240	3-3	68-15/16	47-5/16	43-13/16	GCHIB-18-050P-E1	NS	080805	480
50	480	3-3	68-15/16	47-5/16	43-13/16	GCHIB-18-050P-E1	NS	080813	480
Series 27 — 10 inch, 150 lb carbon steel vessel — 27 INCOLOY® elements¹ (15 W/in²)									
50	240	3-3	68-9/16	43	39-1/2	GCHI-27-050P-E1	NS	020212	400
50	480	3-3	68-9/16	43	39-1/2	GCHI-27-050P-E1	NS	020220	400
60	240	3-3	75-9/16	50	46-1/2	GCHI-27-060P-E1	NS	020239	440
60	480	3-3	75-9/16	50	46-1/2	GCHI-27-060P-E1	NS	020247	440
70	240	3-3	81-9/16	56	52-1/2	GCHI-27-070P-E1	NS	020255	480
70	480	3-3	81-9/16	56	52-1/2	GCHI-27-070P-E1	NS	020263	480
80	240	3-3	91-9/16	66	62-1/2	GCHI-27-080P-E1	NS	020271	520
80	480	3-3	91-9/16	66	62-1/2	GCHI-27-080P-E1	NS	020280	520
90	240	3-3	100-9/16	75	71-1/2	GCHI-27-090P-E1	NS	020298	560
90	480	3-3	100-9/16	75	71-1/2	GCHI-27-090P-E1	NS	020300	560

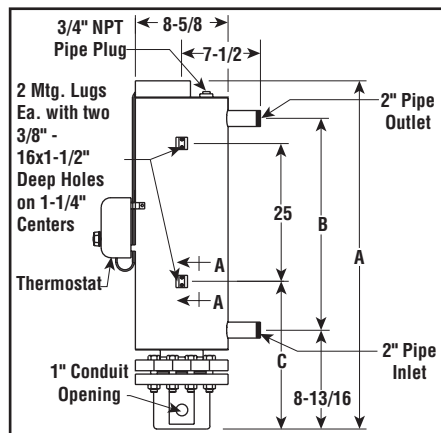
Stock Status: S = stock NS = non-stock
To Order—Specify model, volts, phase, kW, PCN and quantity.

- Outlet gas temperature must be kept below both maximum sheath and vessel temperature or element and heater damage may occur. Contact your Local Chromalox Sales office for application assistance.

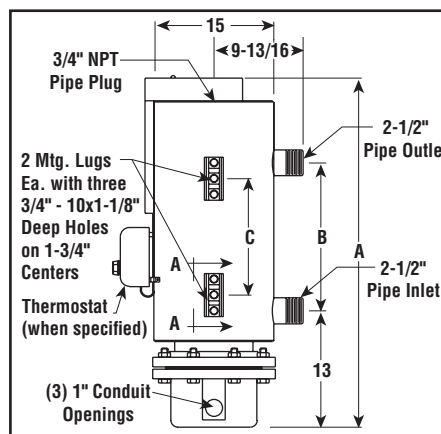
Other Note — Refer to the Controls section for control panels.

Dimensions (Inches)

GCHI-06



GCHIB-18



GCHI-27

